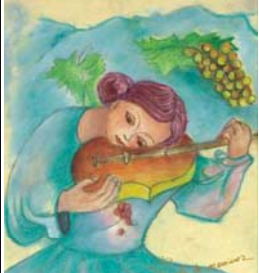


LA VIS *Dipinti*

Müller Thurgau



DISCOVER A NEW FAVORITE TONIGHT!

A cross of Riesling and Sylvaner, this Müller Thurgau is light to medium-bodied, with incredible peach and mango. Wow!

Great quality at a great price!

You'll Love It!

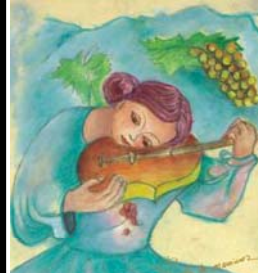
Imported by

banville&jones
WINE MERCHANTS

www.bjwm.com

LA VIS *Dipinti*

Müller Thurgau



DISCOVER A NEW FAVORITE TONIGHT!

A cross of Riesling and Sylvaner, this Müller Thurgau is light to medium-bodied, with incredible peach and mango. Wow!

Great quality at a great price!

You'll Love It!

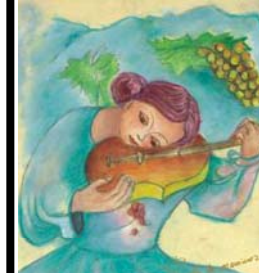
Imported by

banville&jones
WINE MERCHANTS

www.bjwm.com

LA VIS *Dipinti*

Müller Thurgau



DISCOVER A NEW FAVORITE TONIGHT!

A cross of Riesling and Sylvaner, this Müller Thurgau is light to medium-bodied, with incredible peach and mango. Wow!

Great quality at a great price!

You'll Love It!

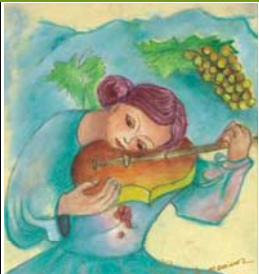
Imported by

banville&jones
WINE MERCHANTS

www.bjwm.com

LA VIS *Dipinti*

Müller Thurgau



DISCOVER A NEW FAVORITE TONIGHT!

A cross of Riesling and Sylvaner, this Müller Thurgau is light to medium-bodied, with incredible peach and mango. Wow!

Great quality at a great price!

You'll Love It!

Imported by

banville&jones
WINE MERCHANTS

www.bjwm.com

LA VIS *Dipinti*

Müller Thurgau



DISCOVER A NEW FAVORITE TONIGHT!

A cross of Riesling and Sylvaner, this Müller Thurgau is light to medium-bodied, with incredible peach and mango. Wow!

Great quality at a great price!

You'll Love It!

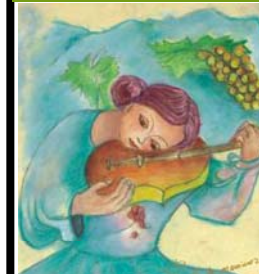
Imported by

banville&jones
WINE MERCHANTS

www.bjwm.com

LA VIS *Dipinti*

Müller Thurgau



DISCOVER A NEW FAVORITE TONIGHT!

A cross of Riesling and Sylvaner, this Müller Thurgau is light to medium-bodied, with incredible peach and mango. Wow!

Great quality at a great price!

You'll Love It!

Imported by

banville&jones
WINE MERCHANTS

www.bjwm.com